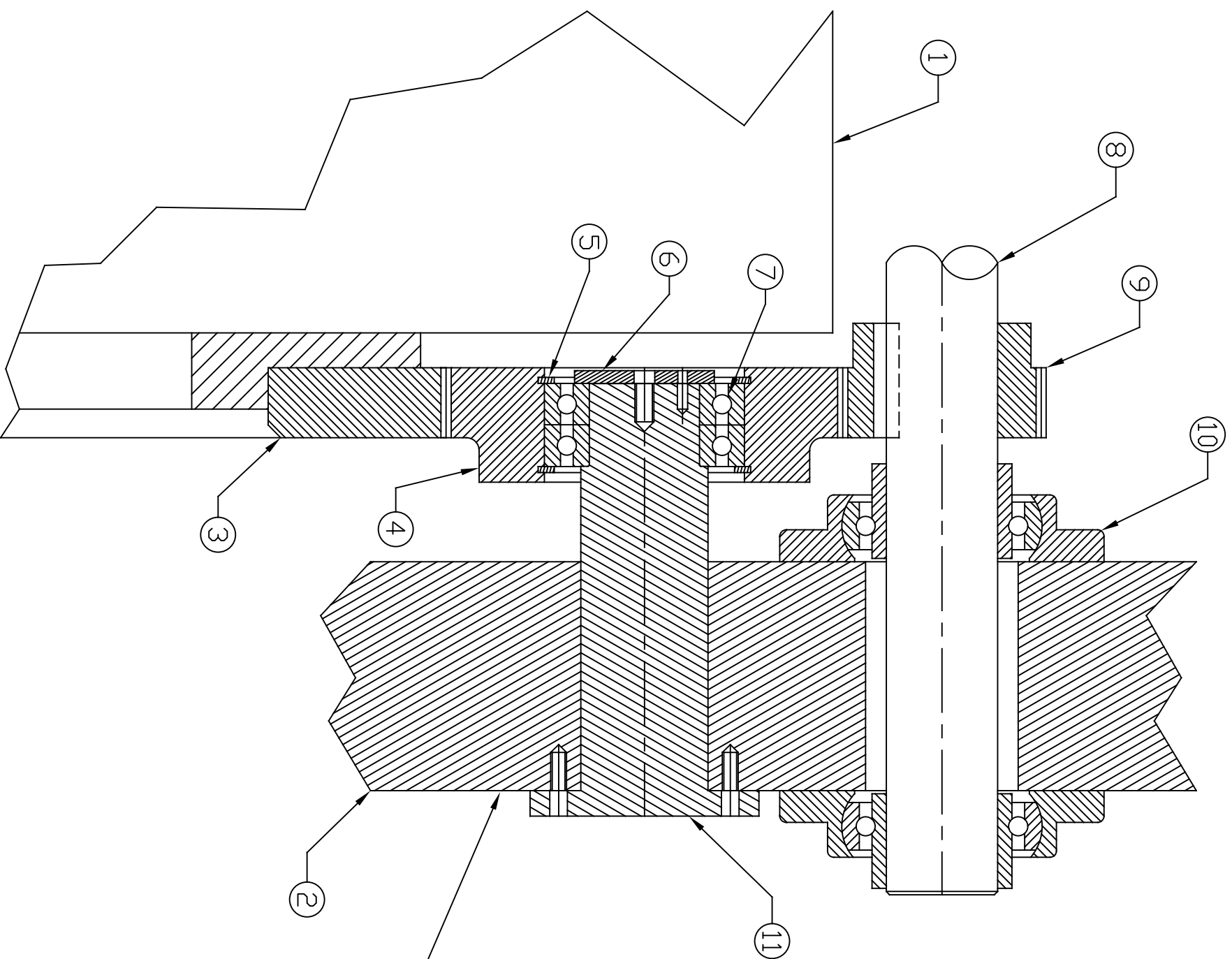



ITEM NO.	DESCRIPTION	PART #	QTY.
1	IMPRESSION DRUM	200-210D	1
2	PRESS FRAME (OPER.SIDE)	200-500D	1
3	BULL GEAR	200C629	1
4 *	INTERMEDIATE GEAR	200-240D	1
5 *	SNAP RING	200-242D	2
6 *	WASHER	200-243D	1
7 *	BEARING	200-241D	2
8 *	PINION SHAFT	200-244D	1
9 *	PINION GEAR	200-245D	1
10 *	BEARING	200-246D	4
11 *	INTERMEDIATE GEAR STUD	200-239D	1

***MOST CI PRESSES CAN BE CONVERTED TO DIRECT DRIVE. DIRECT DRIVE ELIMINATES ITEM NUMBERS 4 THRU 11. INTERESTED? CONTACT WOLVERINE**



OUTSIDE OF OPERATOR SIDE

 FLEXOGRAPHIC MFG. CO. FARMINGTON, MICHIGAN		PRODUCT	DO NOT SCALE	SCALE
		4 COLDR CIRE	DWG	
PART	DATE DRAWN	LATEST REVISION	DATE	REV
GEAR TRAIN	1-23-01	2-26-09		
DESIGN	CHECKED	CUSTOMER	DRAWING NO.	
DETAIL JOHN	APPROVED		200C221A	