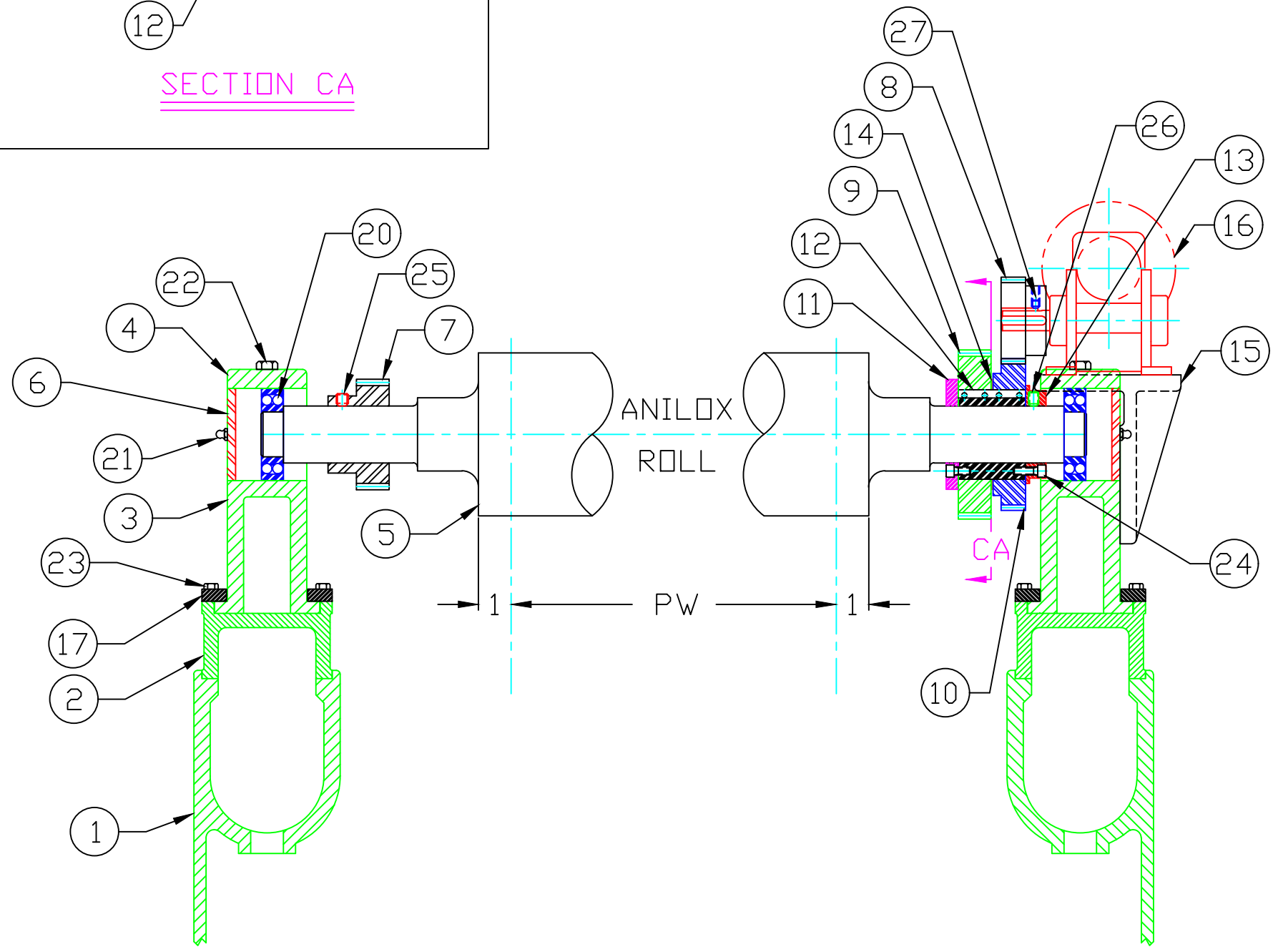


SECTION CA



DRIVE SIDE

OPERATOR SIDE

ID NO.	DETAIL NUMBER	DESCRIPTION	SEE NOTE	M _T L	REMARKS PATTERN NO.
1	000C007	COLOR ARM	2	CI	
2	000-013	PLATE CYLINDER SLIDE	2	CI	
3	000-015	INK ROLL SLIDE	2	CI	
4	000-017	INK ROLL SLIDE CAP	2	CI	
5	000-032	ANILOX ROLL	1	STD	
6	100C058	BEARING COVER WITH G.F.	2	CRS	
7	000-077	ANILOX GEAR	1	CI	
8	000-079	GEAR	1	STD	
9	000-080	FREEWHEELING GEAR	1	HSL	
10	000-081	FREEWHEELING GEAR	1	HSL	
11	000-082	GEAR RETAINER	1	CRS	
12	000-083	DRIVE QUILL	1	HSL	
13	000-084	CLUTCH COLLAR	1	CRS	
14	000-085	CLUTCH SPACER	1	CRS	
15	000-020	BODINE MOTOR BRACKET	1	CI	
16	T.B.D.	BODINE MOTOR	1	STD	
17	000-092	TOP GIBB	4	CRS	
18	100-075P	DOWEL PIN	6	STD	
19	100-015P	SPRING	12	STD	
20	100-005P	BEARING	2	STD	
21		1/8 GREASE FITTING	2	STD	
22		3/8-16 x 2 HEX HEAD	4	STD	
23		1/4-20 x 1 HEX HEAD	16	STD	
24		1/4-20 x 3/4 S.H.C.S.	6	STD	
25		3/8-16 x 3/8 SET SCREW	3	STD	
26		5/16-18 x 3/8 SET SCREW	1	STD	
27		1/4-20 x 1/4 SET SCREW	2	STD	

T.B.D.= TO BE DETERMINED

NOTE: QUANTITY OF PARTS SHOWN
 MATERIAL:
 CI= CAST IRON
 CRS= COLD ROLLED STEEL
 B= BRASS
 STD= MFG. SPECIFICATION
 HSL= HARDENED STEEL

Wolverine
 FLEXOGRAPHIC MFG. CO.
 FARMINGTON, MICHIGAN

PRODUCT	□.S. HL	DO NOT SCALE DWG	SCALE
PART	SECTIONS	DATE DRAWN 5-17-11	LATEST REVISION DATE REV
DESIGN	CHECKED	CUSTOMER	DRAWING NO.
DETAIL JOHN	APPROVED		100C019A